



Inna lillahi wa inna ilayhi raji'un

*"Indeed we belong to Allah,
and indeed to Him we will return."*

Surah Al-Baqarah [2:156]

Supported by Birmingham Muslim Burial Council

***“How people die remains in the
memory of those who live on.”***

ISLAMIC PERSPECTIVE

Inna lillahi wa inna ilayhi raji'un

"Indeed we belong to Allah, and indeed to Him we will return." - Surah Al-Baqarah [2:156]

Ahmad and Tirmidhi report on the authority of Ali ibn Abu Talib that the Prophet (saws) said:

"O Ali, never delay three things: prayer when its time approaches, the funeral when death is confirmed, and marrying a widow or a divorcee when a suitable match is found for her."

BEREAVEMENTS

- **What is Bereavement?**
- **How many people have experienced Bereavement recently?**
- **Bereavement Experience & Support received**
- **Do you know how many deaths were registered in 2018?**
- **Do you know the cost of burial?**
- **Now imagine a person with no family or no support**
- **Bereavement Cases**

INTRODUCTION TO CSMA BIRMINGHAM

Cutchi Sunni Muslim Association Birmingham (CSMA Birmingham)

Formed in 2010 in Birmingham, started off providing a small community religious knowledge

But after recognising a range of issues faced by multi-faith communities such as Bereavements, Funerals and Poverty we started offering the following services for free:

- Bereavement Support
- After Care Support
- Muslim Burial Fund
- Food Banks
- Religious Knowledge

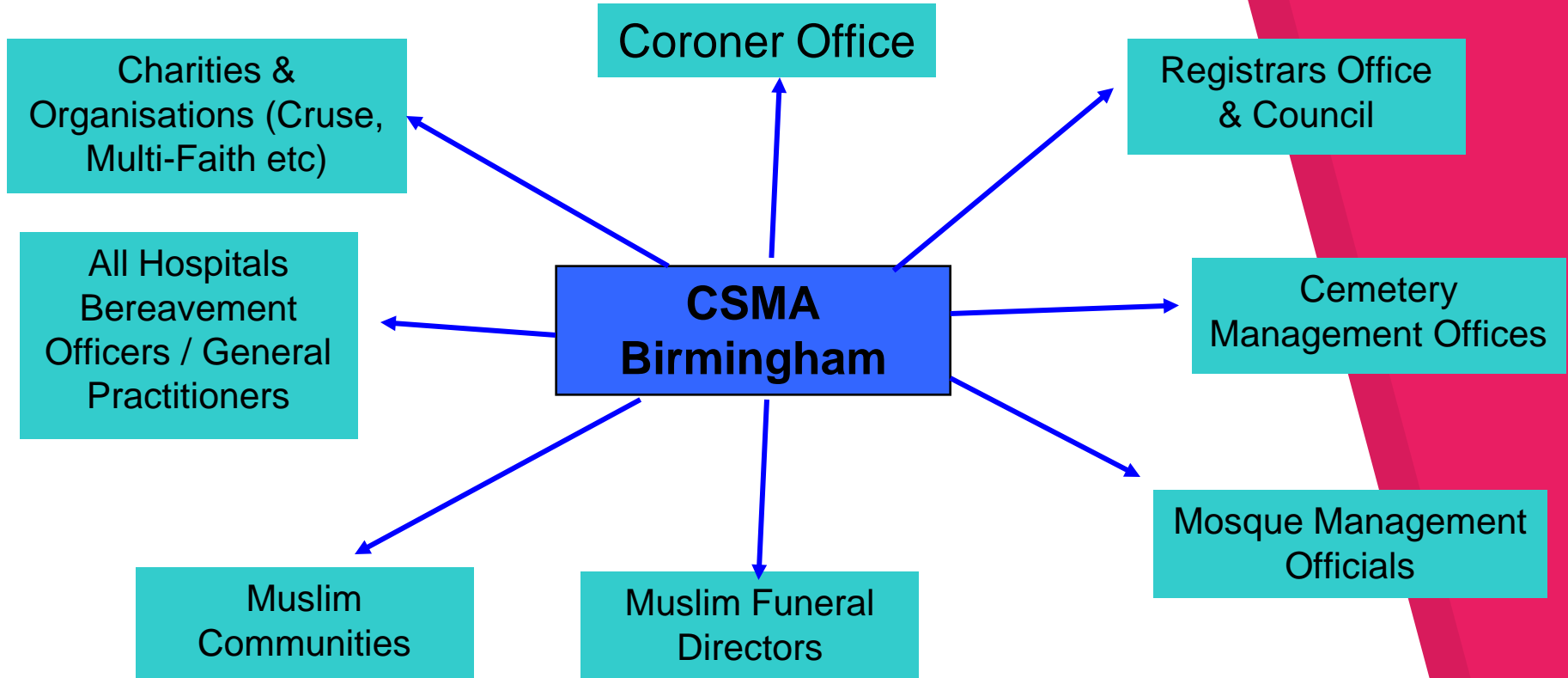
OBJECTIVES

- **Rapid Release Policies in Hospitals**
- **Access to GP'S and Hospital Doctors/Consultants**
- **Access to the Coroner**
- **Access to MRI/CT Scan instead of POST MORTEM**
- **Weekend/Bank Holiday Burials**
- **Muslim Graveyard Facilities**
- **7 Day Access to Register Office/Coroner Office**
- **Educating the Public on the Burial Procedures and Policies**

GOALS

- **Quicker Release of Deceased Body (Rapid Release)**
- **Improve communication and relationship between Doctors, Coroner, Hospitals and relevant authorities**
- **Relieve the bereaved family of anxiety and stressful aspects of burying their loved one**
- **Reduce abuse to Medical staff, Bereavement officers and other stakeholder service staff**
- **Reduce large volume of enquiries from Family & Friends creating further delays at the Coroner Office etc**

STRUCTURE



BEREAVEMENT SUPPORT

- **Hospital Bereavement Support**
- **Coroner Referral or Inquest**
- **Burial Procedure**
- **Digital Autopsy**
- **Death Registration**
- **Cemeteries**
- **Out of England (Avoid Embalming)**

How it Works

- **CSMA Birmingham will only take instructions from the Next of Kin and work with the Funeral Director with the bereavement**
- **CSMA Birmingham will give guide and support with instructions on the relevant process required for the case**
- **Next of Kin/Funeral Director will be responsible for the quick release of the body and complete relevant paper work (Supported by CSMA Birmingham representative)**
- **Please remember we are not funeral directors we work with them and give relevant advice.**

CSMA BIRMINGHAM

- **Free Bereavement Service, work with partnership agencies e.g. BMBC**
- **Free Advisory Support with step-by-step instructions**
- **Free Burial Service for the needy (after full case assessed)**
- **Free After Care Support for families of the deceased**
- **Free Workshops, Training and Seminars**
- **Work with other organisations and charities such as Cruise etc**

USEFUL CONTACTS

Coroners (Sheffield)

Medico-Legal Centre, Watery St, Sheffield S3 7ES

Tel: 0114 273 8721

Register Office (Sheffield)

Town Hall, Pinstone Street, Sheffield, S1 2HH

Tel: 0114 203 9427

Sat, Sun and Bank Holidays 9am-5pm: 07802 864178, or 07764 661143

IGene (Sheffield)

Medico-Legal Centre, Watery St, Sheffield S3 7ES

Tel: 0114 278 0712

MUSLIM BURIAL FUND PROJECT

How can you help? Donate only £5 a month and get a lifetime of sawab (reward) by helping a brother or sister at their time of death.

**CSMA Birmingham
Barclays Bank
Sort: 20-07-82
Account: 73573982**

Remember - "Charity begins at home"

CONTACT DETAILS

Cutchi Sunni Muslim Association (CSMA)

Email: info@csmabirmingham.co.uk

Website: www.csmabirmingham.co.uk

Facebook: www.facebook.com/csmabirmingham

Telephone: 07853 208 506 / 07886 828 671